



Parts Manual

Mfg. No: TM6000x51NA
String Trimmer (2008)

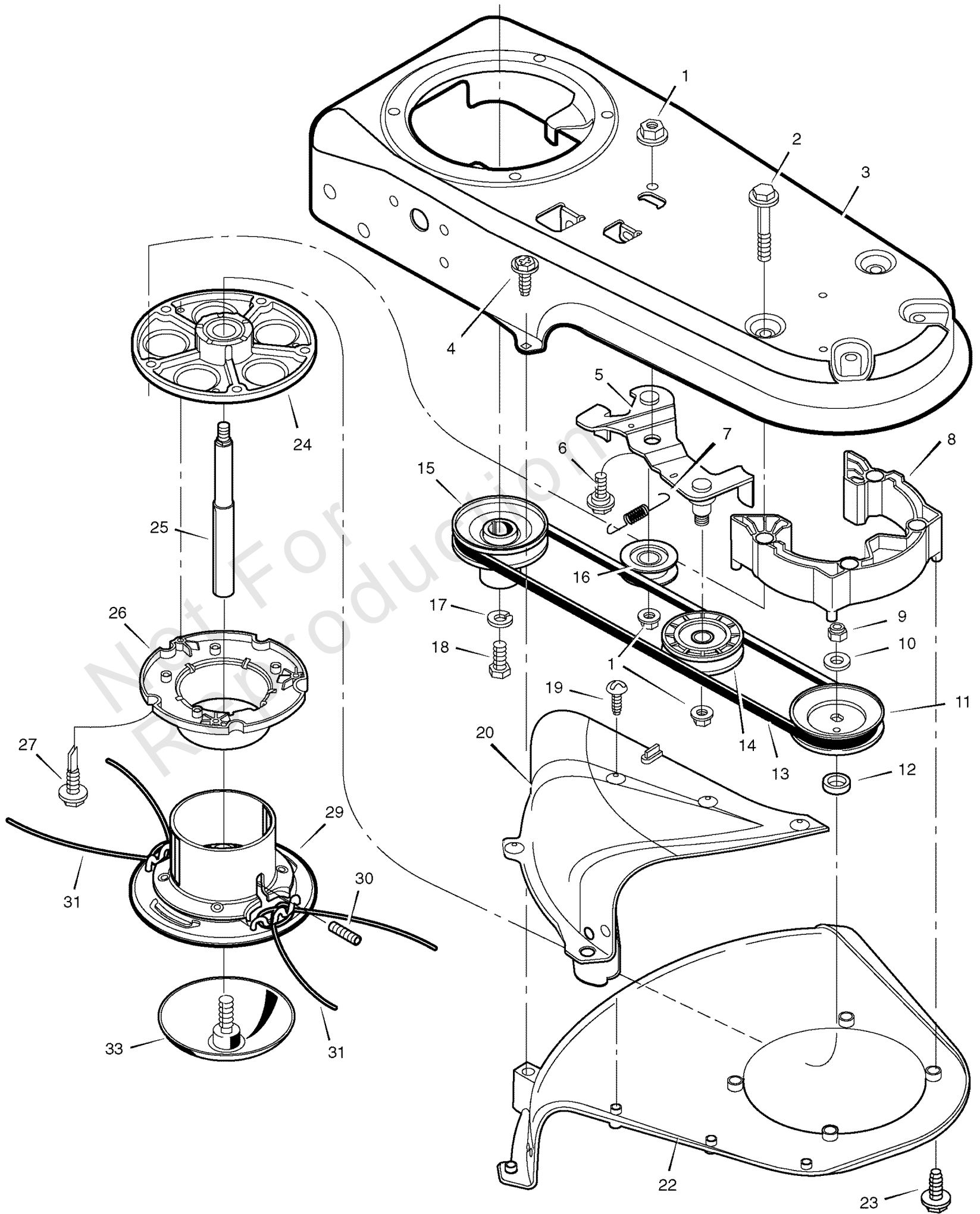
Model Components	Page
Cutting Head Assembly.....	4
Housing Assembly.....	6
Torque Specification Chart.....	8

Not For
Reproduction

Cutting Head Assembly

Note: Unless noted otherwise, use the standard torque specifications

Mfg. No: TM6000x51NA



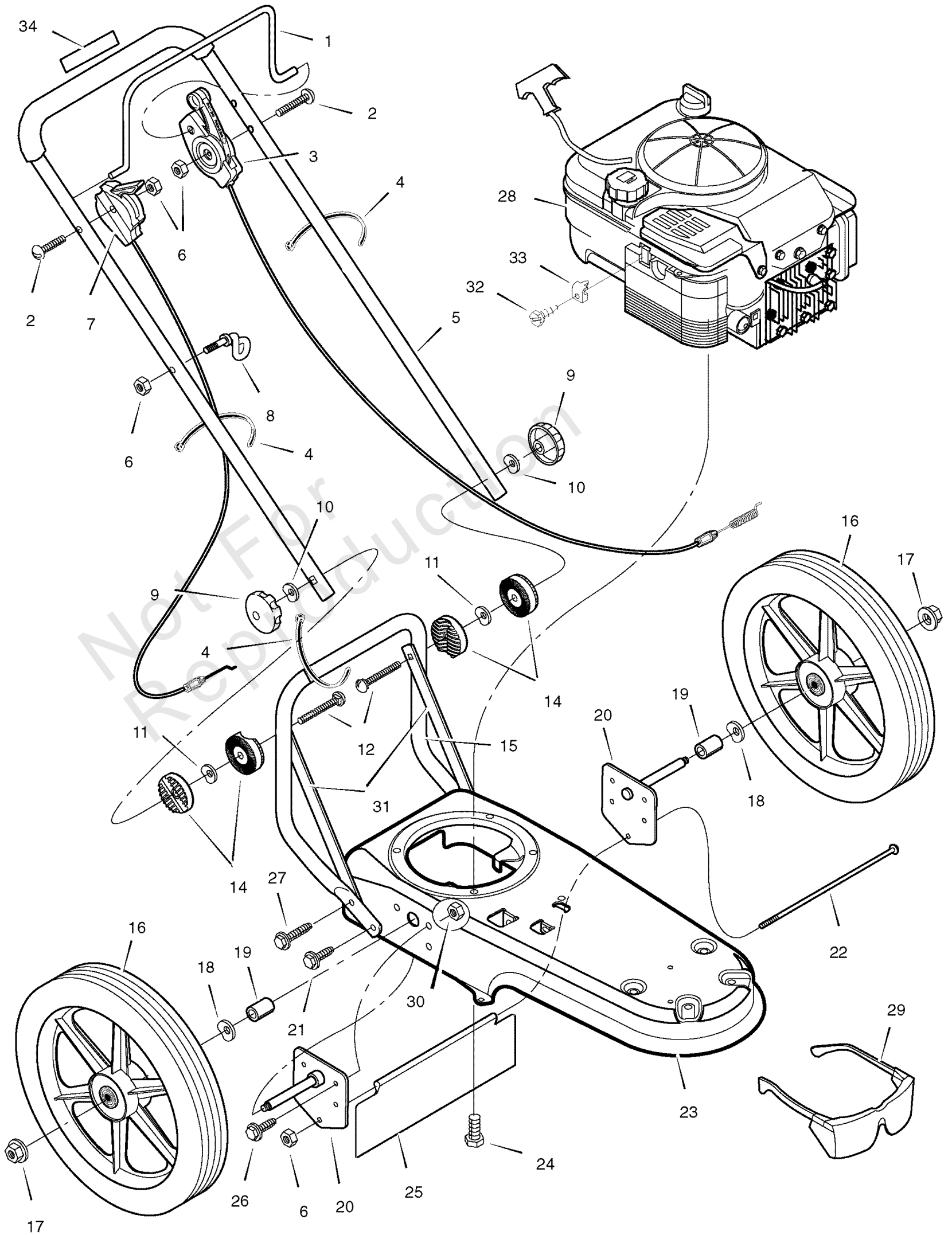
Cutting Head Assembly

REF NO	PART NO	QTY	DESCRIPTION
1	015X84MA		NUT
2	025X11MA		BOLT
3	740150E701MA		HOUSING, Trimmer
4	26X256MA		SCREW
5	740232MA		IDLER ASSEMBLY
6	009X48MA		BOLT
7	712403MA		SPRING
8	740292MA		SPACER ASSEMBLY
9	15X119MA		NUT
10	17X104MA		WASHER
11	740171MA		PULLEY, Cutting Head
12	740173MA		SPACER
13	711933MA		BELT
14	740244MA		PULLEY, IDLER, V, 1.88
15	740179MA		PULLEY, Engine
16	740183MA		PULLEY, Idler
17	018X31MA		LOCKWASHER
18	001X20MA		BOLT
19	26X235MA		SCREW
20	770070MA		GUARD ASSEMBLY
22	740206MA		SHIELD, Trimmer
23	26X294MA		SCREW
24	1001049MA		JACKSHAFT HOUSING ASSEMBLY
25	740300MA		JACKSHAFT
26	740163MA		WRAP, Upper Weed
27	712126MA		SCREW
29	770037MA		CUTTING DISC ASSEMBLY
30	712127MA		SCREW, Set
31	740164MA		LINE, Cutting
33	740299MA		GUIDE ASSEMBLY, Metal Height

Housing Assembly

Note: Unless noted otherwise, use the standard torque specifications

Mfg. No: TM6000x51NA



Housing Assembly

REF NO	PART NO	QTY	DESCRIPTION
1	740198E701MA		LEVER, Stop
2	323035MA		BOLT
3	740193MA		CABLE, Control Latching
4	071372MA		TIE, Cable
5	1741778E701MA		HANDLE, Upper
6	15X116MA		NUT
7	1601039MA		CONTROL, Throttle
8	672510MA		GUIDE, Rope
9	880590MA		KNOB, Handle
10	783000MA		WASHER
11	711936MA		WASHER, Spring
12	711937MA		BOLT
14	740301MA		PIVOT, Handle
15	1741779E701MA		HANDLE, Lower
16	740185MA		WHEEL & TIRE
17	015X84MA		NUT, Axle
18	0020X3MA		WASHER, Spring
19	740190MA		SPACER
20	740188MA		AXLE & BRACKET ASSEMBLY
21	26X274MA		SCREW
22	711935MA		BOLT, Carriage
23	740150E701MA		FRAME, Trimmer
24	0025X6MA		BOLT
25	740192MA		SHIELD, Trailing
26	001X45MA		BOLT
27	26X267MA		SCREW
28	-----		ENGINE -(Engine Model: 122T020164B1)
29	711890MA		PROTECTION, Eye
30	015X88MA		NUT
31	1741780E701MA		STRAP, Vibration Trim
32	26X268MA		SCREW
33	042294MA		CLAMP, Throttle
34	712409MA		DECAL, CE Handle
--	1741777		INSTRUCTION BOOK & PARTS LIST

Hardware Identification & Torque Specifications

Torque Specification Chart								
FOR STANDARD METRIC MACHINE HARDWARE (Tolerance ± 20%)								
Property Class	5.6		8.8		10.9		12.9	
	Class 5.6		Class 8.8		Class 10.9		Class 12.9	
Size Of Hardware	in/lbs	Nm.	in/lbs	Nm.	in/lbs	Nm.	in/lbs	Nm.
	ft/lbs		ft/lbs		ft/lbs		ft/lbs	
M3	5.88	.56	13.44	1.28	19.2	1.80	22.92	2.15
M4	13.44	1.28	30.72	2.90	43.44	4.10	52.56	4.95
M5	26.4	2.50	60.96	5.75	5.97	8.10	7.15	9.7
M6	44.64	4.3	7.3	9.9	10.3	14	12.1	16.5
M7	5.2	7.1	12.1	16.5	16.9	23	19.9	27
M8	7.7	10.5	17.7	24	25	34	29	40
M10	15	21	35	48	50	67	59	81
M12	26	36	61	83	86.2	117	103	140
M14	42	58	101	132	136	185	162	220
M16	64	88	147	200	210	285	250	340
M18	89	121	202	275	287	390	346	470
M20	126	171	290	390	405	550	486	660
M22	169	230	390	530	559	745	656	890
M24	217	295	497	375	708	960	840	1140
M27	320	435	733	995	1032	1400	1239	1680
M30	435	590	995	1350	1401	1900	1681	2280
M33	590	800	1349	1830	1902	2580	2278	3090
M36	759	1030	1740	2360	2441	3310	2935	3980
M39	988	1340	2249	3050	3163	4290	3798	5150

Torque Specification Chart						
FOR STANDARD MACHINE HARDWARE (Tolerance ± 20%)						
Hardware Grade	No Marks		SAE Grade 5		SAE Grade 8	
	SAE Grade 2		SAE Grade 5		SAE Grade 8	
Size Of Hardware	in/lbs	Nm.	in/lbs	Nm.	in/lbs	Nm.
	ft/lbs		ft/lbs		ft/lbs	
8-32	19	2.1	30	3.4	41	4.6
8-36	20	2.3	31	3.5	43	4.9
10-24	27	3.1	43	4.9	60	6.8
10-32	31	3.5	49	5.5	68	7.7
1/4-20	66	7.6	8	10.9	12	16.3
1/4-28	76	8.6	10	13.6	14	19.0
5/16-18	11	15.0	17	23.1	25	34.0
5/16-24	12	16.3	19	25.8	29	34.0
3/8-16	20	27.2	30	40.8	45	61.2
3/8-24	23	31.3	35	47.6	50	68.0
7/16-14	30	40.8	50	68.0	70	95.2
7/16-20	35	47.6	55	74.8	80	108.8
1/2-13	50	68.0	75	102.0	110	149.6
1/2-20	55	74.8	90	122.4	120	163.2
9/16-12	65	88.4	110	149.6	150	204.0
9/16-18	75	102.0	120	163.2	170	231.2
5/8-11	90	122.4	150	204.0	220	299.2
5/8-18	100	136	180	244.8	240	326.4
3/4-10	160	217.6	260	353.6	386	525.0
3/4-16	180	244.8	300	408.0	420	571.2
7/8-9	140	190.4	400	544.0	600	816.0
7/8-14	155	210.8	440	598.4	660	897.6
1-8	220	299.2	580	788.8	900	1,244.0
1-12	240	326.4	640	870.4	1,000	1,360.0

The guides and ruler furnished below are designed to help you select the appropriate hardware.

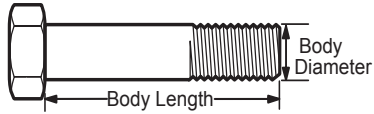


Nut, M8

Thread Diameter (mm)

Inside Diameter (in) Threads per inch

Nut, 1/2-16

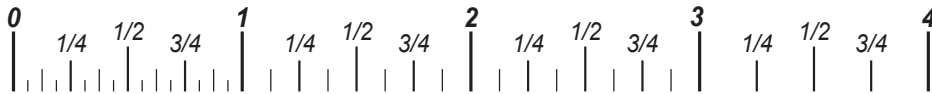


Screw, M8- 1.25 x 25

Thread Diameter (mm) Distance between threads (mm) Body Length (mm)

Body Diameter Threads per inch Body Length (in)

Screw, 1/2- 16 x 2



Standard Hardware Sizing

When a washer or nut is identified as 1/2" (M8), this is the *Nominal size*, meaning the *inside diameter* is 1/2 inch (8mm metric thread diameter); if a second number is present it represents the *threads per inch* (distance between threads).

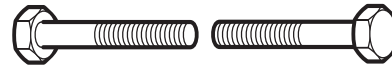
When bolt or capscrew is identified as 1/2 - 16 x 2" (M8 - 1.25 x 50), this means the *Nominal size*, or body diameter is 1/2 inch (8mm metric thread diameter), the second number, 16, represents the *threads per inch*, (*distance between threads*). The final number is the body length of the bolt or screw, 2 inches (50mm).

NOTES

- These torque values are to be used for all hardware excluding: locknuts, self-tapping screws, thread forming screws, sheet metal screws and socket head setscrews.
- Recommended seating torque values for locknuts:
 - for prevailing torque locknuts - use 65% of grade 5 torques.
 - for flange whizlock nuts and screws - use 135% of grade 5 torques.
- Unless otherwise noted on assembly drawings, all torque values must meet this specification.

Common Hardware Types

Hex Head Capscrew



Washer



Carriage Bolt



Hex Nut

Wrench & Fastener Size Guide

1/4" Bolt or Nut Wrench—7/16"	5/16" Bolt or Nut Wrench—1/2"	3/8" Bolt or Nut Wrench—9/16"	7/16" Bolt or Nut Wrench (Bolt)—5/8" Wrench (Nut)—11/16"	1/2" Bolt or Nut Wrench—3/4"
M6 Bolt or Nut Wrench—10mm	M8 Bolt or Nut Wrench—13mm	M10 Bolt or Nut Wrench—17mm	M12 Bolt or Nut Wrench—19mm	M14 Bolt or Nut Wrench—22mm

MURRAY®